

# SINGULARITY

DESIGN

BY

*Yoann Pourde*

# C R E D O

**"We believe architecture should be shaped by a deep understanding of context, culture, and time.**

**We challenge convention, using research, technology, and craft to turn complexity into clarity.**

**We pursue work that is precise, human, resilient, and enduring. Singularity is not a destination. It is a commitment to uncompromising design."**

# COLLABORATIONS

NEUF  
ARCHITECT(E)S

RLB Rider  
Levett  
Bucknall

MEINHARDT

BMA  
BORIS MICKA ASSOCIATES

Turner & Townsend

DLRGROUP

shankland cox

Heatherwick  
studio

aukett  
swanke

john r harris

Woods  
Bagot

Ateliers  
Jean Nouvel

TAMKEEN

EXPO  
2020  
DUBAI  
UAE

DMCC

wasl

EMAAR

ARADA

PIF

DAR  
GLOBAL

REGIS

NAKHEEL

MASDAR

حريطية للنسجية  
Saudi Aramco

Ferrari  
WORLD

ALDAR

IMKAN

SELECT  
GROUP

TECOM  
GROUP

سومان سوم طري الطرية  
NYU | ABU DHABI

# PORTFOLIO

CURATED

This portfolio presents selected work undertaken in collaboration with various clients, consultants, studios, and project teams.

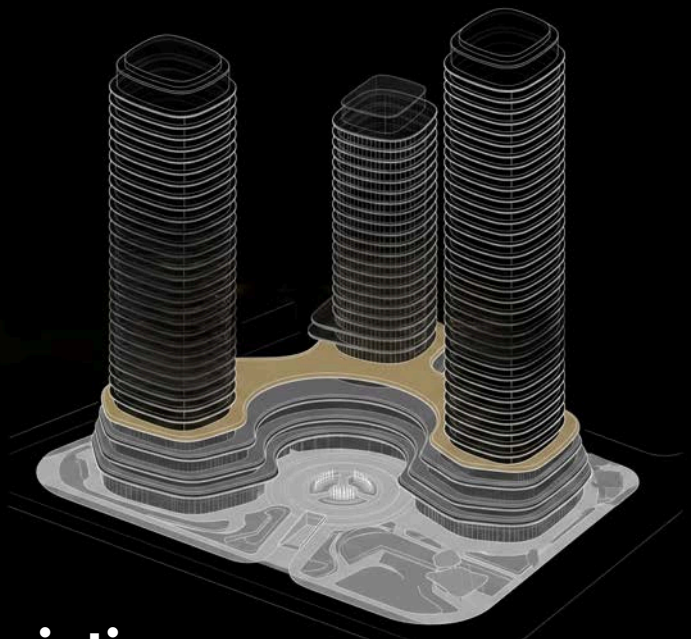
All content is shown for illustrative and professional portfolio purposes only. Project information, imagery, concepts, and related materials remain subject to the applicable rights, permissions, confidentiality obligations, and contractual arrangements of the relevant parties.

No content is intended to suggest sole authorship, ownership, or entitlement beyond Yoann Plourde's respective professional involvement.

# ST REGIS RESIDENCES AND OFFICES

LIMASSOL, CYPRUS





### Description

The three towers rise from a shared podium to create a layered mixed-use destination, bringing together living, working, hospitality, retail, and public life. Balancing urban density with landscape, amenity, and retreat, the development expresses a forward-looking vision for an integrated vertical community.

### Specifications

TYPE	_____	Mixed Use
YEAR	_____	2026-[...]
BUDGET	_____	CONFIDENTIAL
GFA	_____	73,000 SQM
LOD	_____	RIBA Stage 2

### Implication

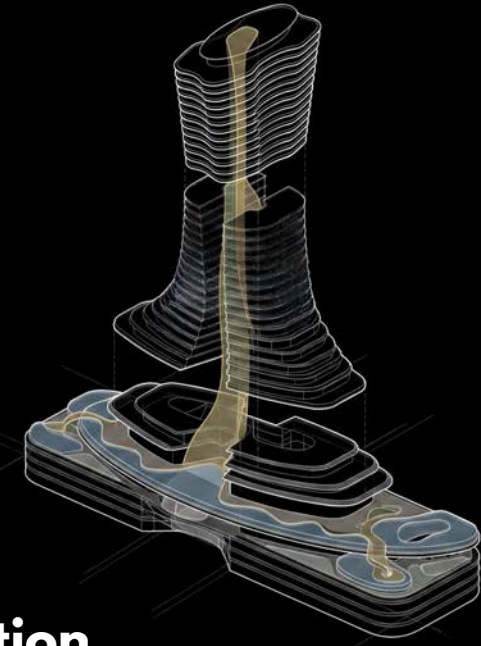
Architectural Design, Space Planning, Interior and Landscape Integration, Client Presentation, Design Coordination. Involved from concept development through Schematic Design, supporting the evolution of the architectural vision, spatial planning, visitor experience, landscape integration, and final competition presentation material.



# COMO RESIDENCES

PALM JUMEIRAH DUBAI





## Description

Located on Palm Jumeirah, Como Residences is a 76-story, 317m high tower. Inspired by the aesthetics of the Sea, the Sky, and the Beach, the unique residential building will offer a new level luxury to its residents along with state-of-the-art amenities. The project will be a unique contribution to Dubai skyline as a fully self-shaded tower with an evident

## Specifications

TYPE	Residential
YEAR	2022 - [...]
BUDGET	CONFIDENTIAL
GFA	64,000 SQM
LOD	RIBA Stage 4

## Implication

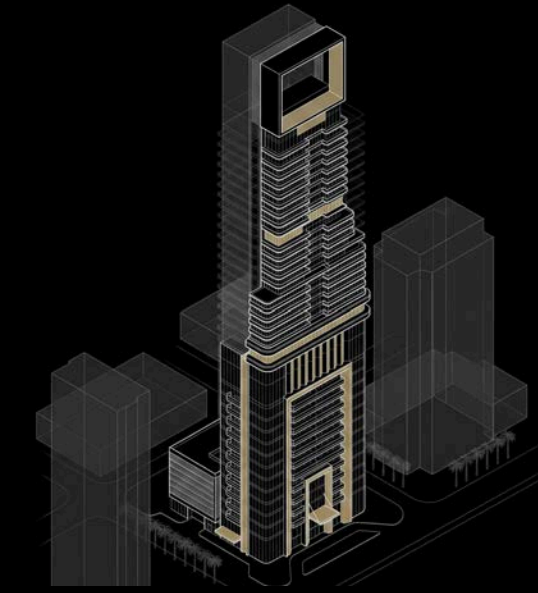
Architectural Design / Space Planning / Interior Design / Landscape Design Client Presentation / Project management / Multidisciplinary Coordination Full project involvement from the competition phase to the final presentation in Saudi Arabia and Expo 2020 submission process. International collaboration BMA (awarded designer of the pavilion) under the supervision of a principal.



An aerial photograph of downtown Dubai, United Arab Emirates, at dusk. The sky is a deep blue, transitioning to a lighter hue near the horizon. The city is filled with numerous skyscrapers, many of which are illuminated with warm lights. In the foreground, a large, modern building with a curved facade is visible on the left. In the center, a complex highway interchange with multiple overpasses is lit up. On the right, a tall, slender skyscraper, the Trump Tower, is under construction, with its top section appearing as a dark, rectangular structure. The overall scene captures the vibrant and modern urban landscape of Dubai.

# TRUMP TOWER

DOWNTOWN DUBAI



### Description

Rising as an iconic supertall landmark, the mixed-use tower brings together premium residences, hospitality, retail, workplace, and destination amenities. Balancing ambition, performance, and urban identity, it creates a defining destination and a symbol of future growth.

### Specifications

TYPE	_____	Mixed Use
YEAR	_____	2025-[...]
BUDGET	_____	CONFIDENTIAL
GFA	_____	80,000 SQM
LOD	_____	RIBA Stage 3

### Implication

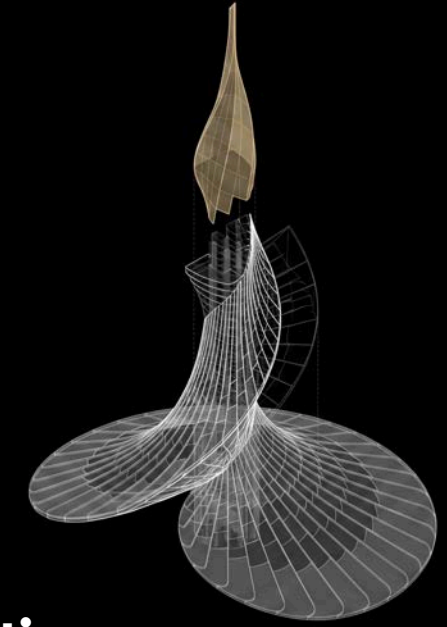
Architectural Design, Space Planning, Interior and Landscape Integration Client Presentation, Design Coordination. Involved from early concept development through Schematic Design, contributing to the refinement of the architectural vision, spatial organisation, visitor journey, landscape integration, and final competition presentation material.



A scenic view of Dubai Creek Harbour featuring the 'The Icon' tower, a dense forest of mangroves, and several birds in flight over the water. The city skyline is visible in the background under a clear sky.

# THE ICON

DUBAI CREEK HARBOUR



## Description

Rising as a landmark on the skyline, the tower creates a bold architectural statement that brings together premium living, hospitality, retail, and destination amenities within a single vertical experience. Its sculptural form reflects the city's ambition, combining innovation, elegance, and performance to shape a new symbol of urban identity.

## Specifications

TYPE	_____	Cultural
YEAR	_____	2022-[...]
BUDGET	_____	CONFIDENTIAL
GFA	_____	33,000 SQM
LOD	_____	RIBA Stage 4

## Implication

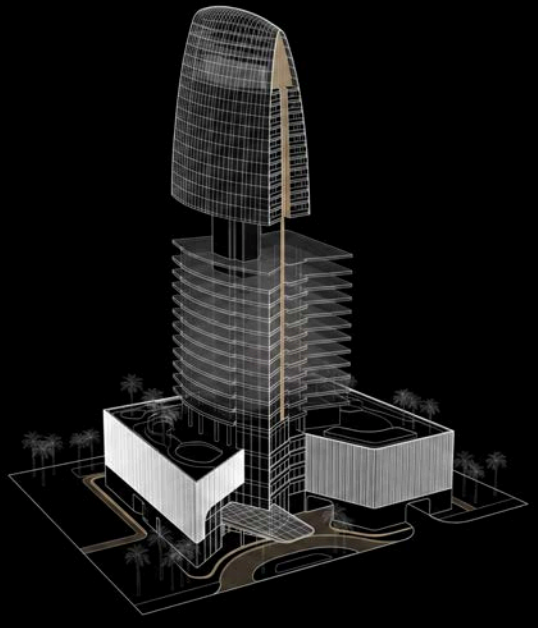
Façade Design, Materiality Studies, Envelope Development, Architectural Detailing, Client Presentation, Design Coordination. Involved from early concept development through Schematic Design, contributing to the evolution of the façade concept, material palette, glazing strategy, architectural expression, and coordination of key envelope elements within the overall design vision.



# SIX SENSES MARINA TOWER

DUBAI MARINA





### Description

Rising as a defining branded residential landmark, the supertall tower offers an elevated living experience shaped by hospitality, wellness, privacy, and panoramic views. Its sculptural form combines architectural distinction with a carefully curated lifestyle, creating an exclusive vertical destination that reflects the city's ambition.

### Specifications

TYPE	Residential
YEAR	2024- [...]
BUDGET	CONFIDENTIAL
GFA	110,000 SQM
LOD	RIBA Stage 4

### Implication

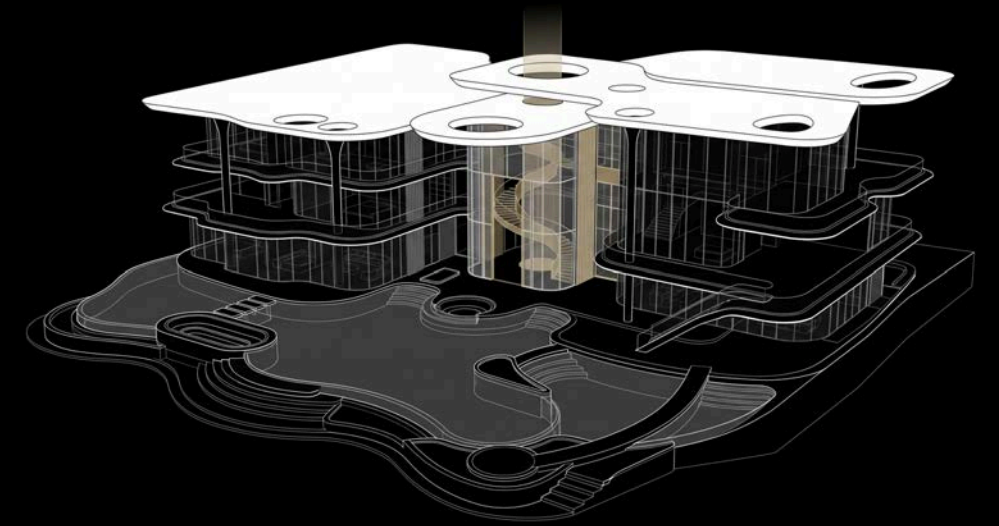
Crown Design, Architectural Form Development, Premium Amenity Integration, Façade Expression, Client Presentation, Design Coordination. Involved from early concept development through Schematic Design, contributing to the evolution of the tower crown as a defining architectural gesture, integrating sky amenities, upper-level spatial planning, façade articulation and the overall skyline identity.



# ULTRA LUXURY MANSION

CHEVAL ISLAND DUBAI





### Description

Set within a carefully composed landscape, the ultra-luxury villa creates an immersive retreat shaped by light, materiality, and a seamless dialogue between architecture and nature. Balancing privacy, wellness, entertainment, and refined living, the residence offers a timeless expression of comfort and sophistication, designed to elevate everyday life through calm, connection, and exceptional experience.

### Specifications

TYPE	_____	Residential
YEAR	_____	2026-[...]
BUDGET	_____	CONFIDENTIAL
GFA	_____	6,000 SQM
LOD	_____	RIBA Stage 1

### Implication

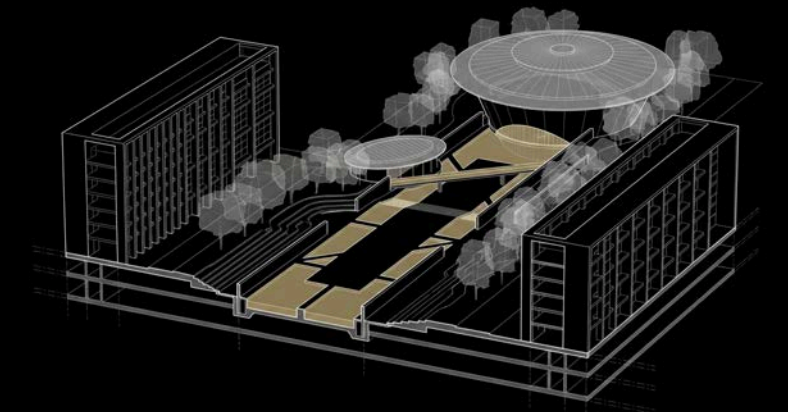
Architectural Ideation, Concept Development, Spatial Narratives, Material and Form Studies, Presentation Strategy, Design Coordination. Involved from early concept stages, contributing to the generation and refinement of the architectural vision through massing exploration, spatial sequencing, atmosphere studies, and high-impact presentation material.



# IL TEATRO BY ANDO

AL JADA SHARJAH





### Description

Conceived as a cultural destination, the theatre creates an immersive journey through performance, gathering, and shared experience. Balancing architectural expression with acoustics, atmosphere, and public life, the project brings together stagecraft, landscape, and civic identity to establish a memorable venue for creativity.

### Specifications

TYPE	_____	Cultural
YEAR	_____	2022-[...]
BUDGET	_____	CONFIDENTIAL
GFA	_____	12,000 SQM
LOD	_____	RIBA Stage 3

### Implication

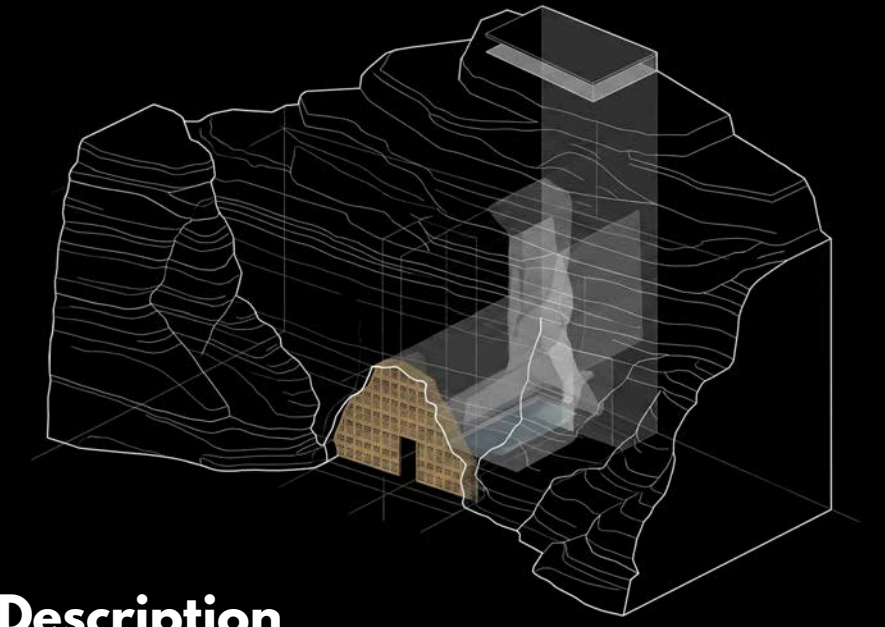
Architectural Design Development , Auditorium and Back-of-House Planning, Interior and Landscape Coordination, Client Presentation, Design Management · Multidisciplinary Coordination. Involved through the later design stages, supporting the refinement of the theatre's architectural expression, audience experience, spatial performance, technical integration, material development, and coordinated design delivery.



An aerial photograph of a desert landscape. In the center, a large, circular, light-colored structure, possibly a well or a reservoir, is visible. A dark, winding path or road curves around the structure. The terrain is sandy and rocky, with some small plants and trees scattered throughout. The overall color palette is warm, dominated by shades of brown, tan, and beige.

# SHARAAN RESORT BY JEAN NOUVEL

AL ULA SAUDI ARABIA



### Description

Set within a protected natural landscape, the resort and summit centre creates an immersive journey shaped by ecology, wellbeing, and exchange. Balancing hospitality, gathering, and retreat with a deep respect for the surrounding environment, the project integrates architecture, landscape, and low-impact design to support conservation, learning, and meaningful connection with nature.

### Specifications

TYPE	_____	Hospitality
YEAR	_____	2022-[...]
BUDGET	_____	CONFIDENTIAL
GFA	_____	CONFIDENTIAL
LOD	_____	RIBA Stage 4

### Implication

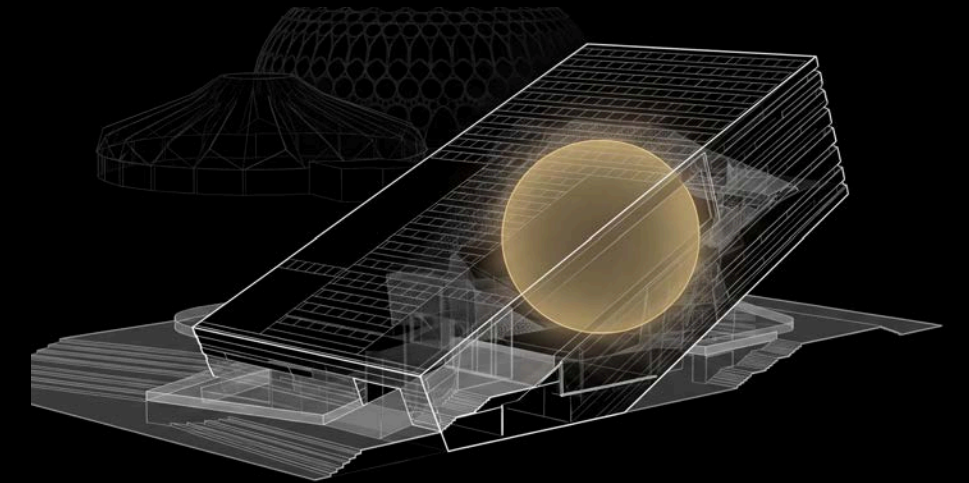
Architectural Design Development, Environmental Integration, Low-Impact Systems Coordination, Material and Construction Strategy, Client Presentation, Multidisciplinary Coordination. Involved through the technical design stages, supporting the resolution of complex site, climate, conservation, and buildability requirements while maintaining the project's architectural vision and sensitive relationship.



# SAUDI PAVILION

DUBAI EXPO 2020





## Description

The pavilion, opening up from the ground and soaring into the sky, will offer an immersive journey showcasing Saudi Arabia's transformation time. Balancing rich heritage and natural wonders with the energy, creativity and innovativeness of its people, the pavilion will demonstrate how Saudi Arabia is shaping both its own and the world's future.

## Specifications

TYPE	Cultural
YEAR	2018-2019
BUDGET	520M SAR
GFA	12,000 SQM
LOD	RIBA Stage 3

## Implication

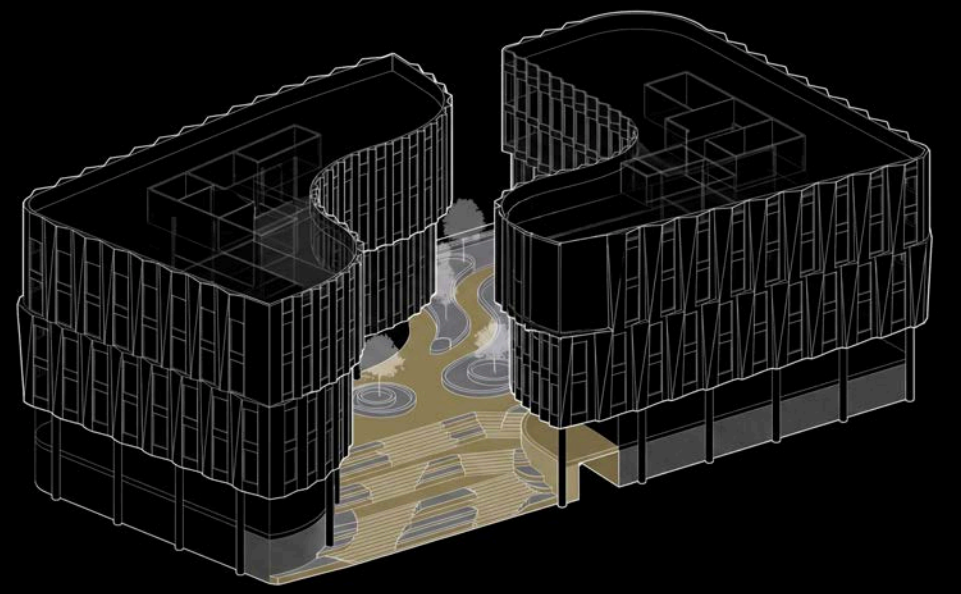
Architectural Design / Space Planning / Interior Design / Landscape Design Client Presentation / Project management / Multidisciplinary Coordination Full project involvement from the competition phase to the final presentation in Saudi Arabia and Expo 2020 submission process. International collaboration BMA (awarded designer of the pavilion) under the supervision of a principal.



# MASDAR CITY SQUARE

MASDAR CITY ABU DHABI





### Description

A sustainable workplace campus in the heart of Masdar City, Abu Dhabi, comprising seven office buildings connected by a shared podium with amenities and commercial spaces. Inspired by traditional climate-responsive design, the project creates shaded, efficient, and people-focused work environments.

### Specifications

TYPE	_____	Mixed Use
YEAR	_____	2019-2026
BUDGET	_____	50M SAR
GFA	_____	30,000 SQM
LOD	_____	RIBA Stage 4

### Implication

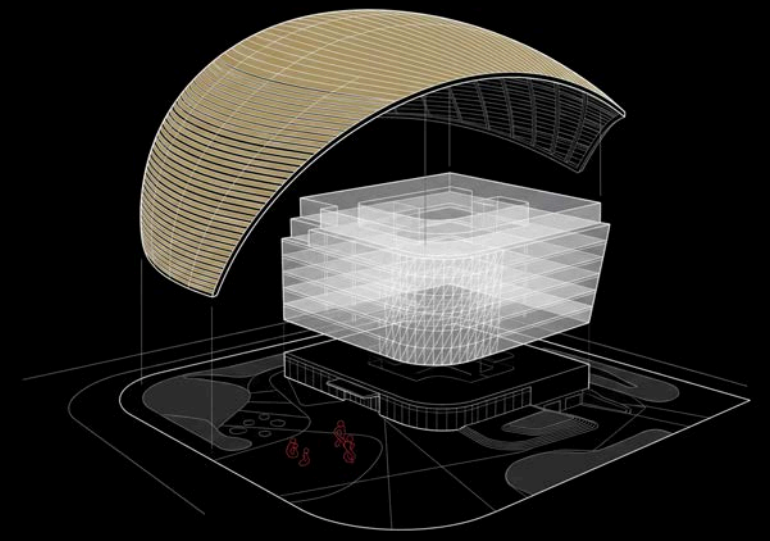
Urban Studies, Architectural Design, Space Planning, Landscape Design  
Client Presentation, Project management, Multidisciplinary  
Coordination Full project involvement from the competition phase to the project delivery. Direct relation with client under the supervision of a Principal.



# MASDAR CITY HEADQUARTERS

MASDAR CITY ABU DHABI





### Description

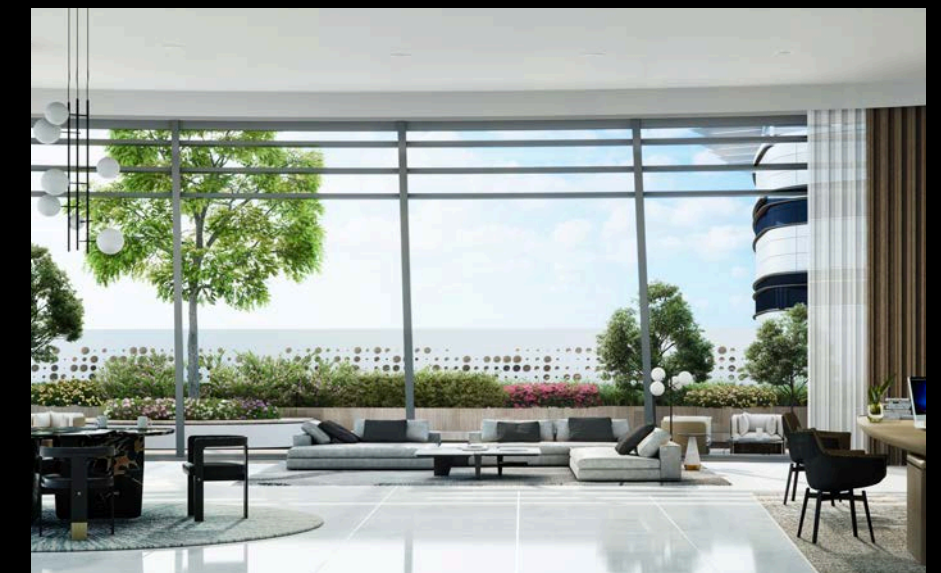
A sustainable workplace in the heart of Masdar City, Abu Dhabi, the HQ is buildings connected by a shared podium with amenities and commercial spaces. Rooted in traditional climate-responsive principles, the project integrates shaded public realms, passive cooling strategies, and a high-performance PV canopy designed to support ambitious Net Zero operational targets for the headquarters building.

### Specifications

TYPE	Office
YEAR	2019-2026
BUDGET	CONFIDENTIAL
GFA	9,000 SQM
LOD	RIBA Stage 4

### Implication

Architectural Design, Space Planning, Interior Design, Landscape Design Client Presentation, Project management, Multidisciplinary Coordination Full project involvement from the competition phase to the final presentation in Saudi Arabia and Expo 2020 submission process. International collaboration BMA (awarded designer of the pavilion) under the supervision of a principal.



# PERFORMATIVE PHILOSOPHY

Specialising in sustainable, high-performance architecture, Yoann brings more than 17 years of international experience across workplace, residential, hospitality, and tall-building developments. His work is defined by a balance of design ambition, technical clarity, and commercial awareness; transforming complex briefs into coherent, enduring architectural outcomes.

With a strong record of contributing to award-winning competitions and multidisciplinary projects, he combines innovation, sustainability, and rigorous delivery through a holistic, research-led approach. His understanding of architecture, engineering, and construction strengthened by advanced design technologies, AI enabled workflows, and extensive BIM expertise allows him to anticipate challenges early, align teams, and unlock value throughout the design process.

Yoann leads with curiosity, collaboration, and a belief that purposeful design should create meaningful human experiences while responding responsibly to environmental, cultural, and economic realities.

# PRACTICE FOUNDATIONS

## Sciences Letters & Arts

Jonquiere Cegep  
Saguenay, Canada

An enriched interdisciplinary pre-university programme combining natural sciences, mathematics, humanities, literature, philosophy, and visual arts.

Designed for high-performing and intellectually versatile students, it fosters broad critical thinking and provides access to an extensive range of university pathways.

2004-2007

## Bachelor Architecture

Laval University  
Quebec, Canada

A selective undergraduate programme that builds the academic, technical, and design foundation required to progress to the professional Master of Architecture, the essential next step toward architectural practice in Quebec and across Canada.



LAVAL UNIVERSITY AWARDS  
For Academic Performance

2007-2010

## Master Architecture

Laval University  
Quebec, Canada



RCA ARCHITECTS AWARD  
Best Representative  
For Next Generation  
Architects



QUANTA ARCHITECTS  
AWARD Best Design And  
Computer Generated  
Visualization



LAVAL UNIVERSITY AWARDS  
For Academic Performance

2010-2012

## OAQ Accreditation

CCA  
Montreal, Canada

A national professional examination assessing competencies in design, technical coordination, project delivery, contracts, and practice.

In Québec, passing the ExAC is part of the admission process to the Ordre des architectes du Québec (OAQ), granting the right to use the title Architect and practise in Québec.

2015-[...]

# PROFESSIONAL EXPERIENCE

## Design Architect

RCA Architect  
Quebec, Canada

Involved in architectural design and coordination, under the supervision of the Studio head designer.

In charge of the ideation, functional programming and presentation of multiple projects.

Participation in award-winning presentation document including CGI and animation realization.

2008-2012

## Design Architect

NEUF Architects  
Montreal, Canada

Project management for most new projects, under the supervision of a senior associate.

Variety of clients and project types: financial groups, corporate law firms, school institutions, property developers and mid to high-end hospitality/residential. Experience in all aspects of a project life while pursuing the Studio goals in Design excellence, execution and sustainability.

2012-2016

## Senior Design Architect

Aukett Swanke  
Dubai, UAE

In charge of architectural design, coordination and client relation. Involved in competitions and presentation strategy.

In charge of the BIM integration across the Dubai Studio for both documentation and production of visual content.

Involved in the Research & Development Stream.

2017-2019

## Associate Design Leader

Woods Bagot  
Dubai, UAE

In charge of new projects leadership, architectural design and coordination under the supervision of a Principal.

Main client contact point including contractual and financial management.

Involved in the Global Studio Design & Delivery Stream for innovation and development methods.

2019-2025

## Design Principal

Integrity Design  
Dubai, UAE

Lead architectural vision, concept development, and delivery strategy for new projects alongside the Design Director.

Oversee design coordination, client engagement, and key commercial, contractual, and programme matters while protecting design quality and intent. Support studio-wide design excellence and best-practice initiatives.

2025-...

# EXECUTIVE CAPABILITIES

## Architectural Design Leadership

Leads the development of ambitious architectural visions from early concept through design resolution, bringing international experience across complex, high-profile, and competition-led projects. Combines creative direction, research, innovation, and strategic thinking to establish distinctive, commercially relevant design outcomes.

## Client Engagement & Strategic Communication

Builds trusted relationships with clients, stakeholders, and multidisciplinary teams through clear communication, strong presentation skills, and informed design leadership. Comfortable representing the practice in high-pressure environments, aligning diverse expectations, and translating complex challenges into confident, actionable decisions.

## Technical Design Integration & Delivery

Bridges design ambition with technical feasibility, coordinating architecture, systems, materials, construction logic, and delivery requirements across varied project scales, sectors, and climatic contexts. Experienced in protecting design intent while guiding teams through increasingly complex stages of development and coordination.

## Commercial & Project Governance

Brings commercial awareness to design leadership through experience in bids, scope definition, consultant coordination, variation management, contractual documentation, invoicing, and financial forecasting. Supports project health by balancing design quality, programme, resources, risk, and commercial performance.

# TECHNICAL EXPERTISE

**BIM, Documentation  
Coordination**

Autodesk Revit  
Autodesk AutoCAD

Autodesk Naviswork  
Nemetschek Bluebeam

Rayon Design  
Microsoft Project

**Computational Design  
3D Modelling**

Rhinoceros 3D  
Grasshopper

SketchUp Pro  
Autodesk 3ds Max

Maxon Cinema 4d

**3D Visualisation  
Architectural Storytelling**

Enscape  
5D Render

V-Ray (3dsMax, Sketchup)  
Adobe Creative Suite

Luma Fusion  
Reg Giant Magic Bullet

**Ai-Enabled Design  
Visual Enhancement**

Google Flow  
Higgsfield

Midjourney  
MNML

Chat GPT  
Claude

**Digital Prototyping  
Model Fabrication**

Autodesk Netfab  
Simplify 3D

# CONTACT & ENGAGEMENT



## Direct Contact

Dubai, United Arab Emirates  
yoannplourde@gmail.com  
+971 54 407 0108

## Social Media

<https://www.linkedin.com/in/yoann-plourde-bsc-m-arch-oaq-4787bba3/>  
<https://www.behance.net/yoannP/>  
<https://www.instagram.com/yoannplourde/>

## Volunter Collaborations

PB+CO Repositioning Relation Between Man and Nature  
300PP; A1; Art Printing and Publishing Co., Ltd. (HK), Wanjin University Press,  
2012.

## Public Talks

SPK Dubai | Elevate & Connect | H Hotel Dubai | June 2026  
IDAC Summit | Sustainable Design Edition | Dusit Thani Dubai | December 2025  
GGG Global Glass Show | 2nd Edition | Online Webinar | September 2024  
ZAK World of Facades | Avant-Garde Edition | CC Arena Dubai | June 2024  
RIBA Global Architecture Photography | Winners Panel | November 2021

## Academic

<https://www.arc.ulaval.ca/a-propos/boursiers>

# SINGULARITY

DESIGN

BY

*Yoann Pourde*